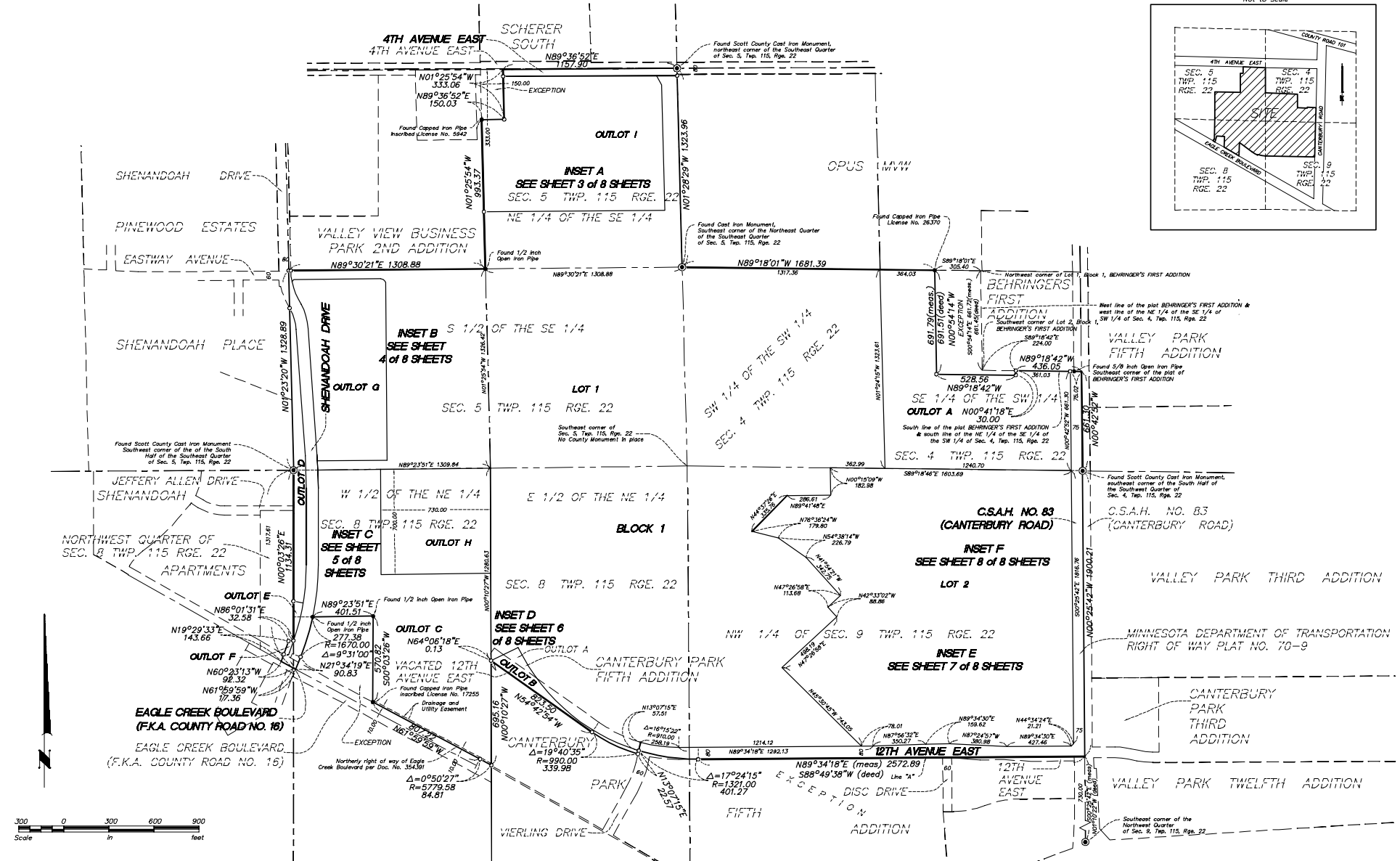
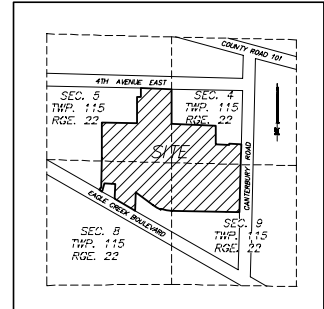


CANTERBURY PARK SIXTH ADDITION

VICINITY MAP
Not to Scale



The North line of the Northeast Quarter of the Southeast Quarter of Section 5, Township 115, Range 22 is assumed to bear N 89°36'52" E.

○ Denotes set 1/2 inch x 14 inch iron rebar marked with plastic cap inscribed LS 43999, which has been set or will be set in accordance with MS 505.021, Subd. 10.

● Denotes iron monument found and marked as shown.
⊙ Denotes found Scott County Cast Iron Monument.

Westwood
Professional Services, Inc.

Sheet 2 of 8 sheets